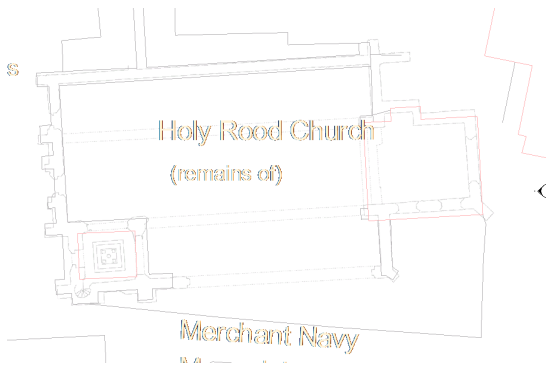


Revit Ruins Model to Ethos



Revit

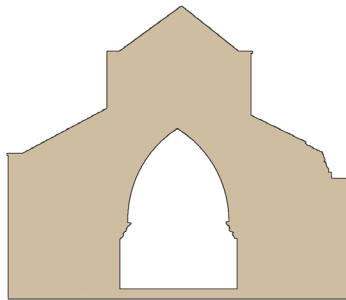
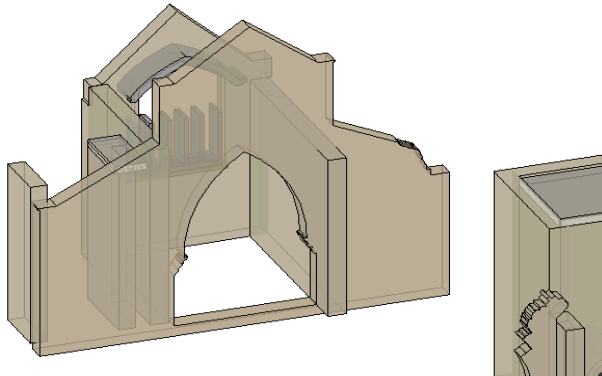
Drawn plans with no scale can be overlaid with plans from DigiMap that have less detail but are of a known scale.

The drawing can then be scaled and rotated to align as well as possible.

Revit

Walls with the required thickness can be drawn on the plans. A dwg or png image can be inserted into the elevation or section view and used to redraw the wall profile to show the current state of repair.

Pdfs can be converted to dwgs in Illustrator, Object menu - release the clipping mask.



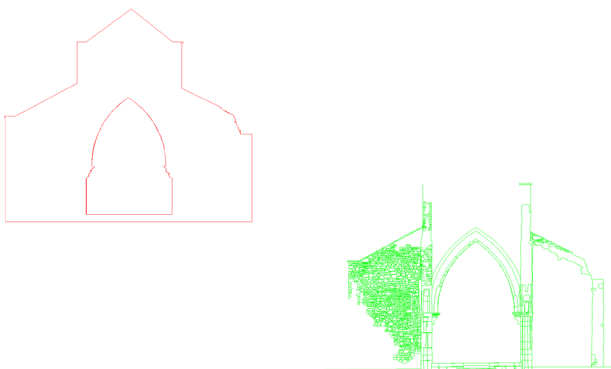
Revit

Errors experienced when altering the wall profiles excessively (other joined walls will limit cutting) can be overcome by modelling complicated walls in a separate Revit file and then linking the wall file with the main model.

Illustrator

Elevation or section views can then be exported as dwgs to Illustrator where they can be saved as Illustrator legacy CS2 files (no compression) that can be opened in Ethos.

The pdfs can be opened in Ethos directly.



Ethos

The Elevation views can be copied into a laser cutter file, the cut option selected and the lines grouped.

The pdf view can be copied into the same laser cutter file, the kiss cut option selected and the lines grouped.

